

Plotted By: Jackson, Elise Date: March 27, 2026 09:52:53am File Path: K:\SLO\Civil\193152000 - Lakehead Club - DCC\CADD (CDD)\Exhibits\DEQ General Layout (COVER ALL).dwg
 This document, together with the concepts and designs presented herein, is intended only for the specific purpose and client for which it was prepared. Reuse of and improper reliance on this document without written authorization and adaptation by Kimley-Horn and Associates, Inc. shall be without liability to Kimley-Horn and Associates, Inc.

GENERAL NOTES

1. ALL CONTOURS ARE 25' INTERVALS.
2. NO EXISTING BUILDINGS OR DRIVEWAYS EXIST ON SITE.
3. NO FLOODPLAINS AS DELINEATED BY FEMA OR LOCAL FLOODPLAIN AUTHORITIES EXIST ON SITE.
4. TRACT IMPERVIOUS AREAS ACCOUNT FOR FUTURE DEVELOPMENT.

LEGEND

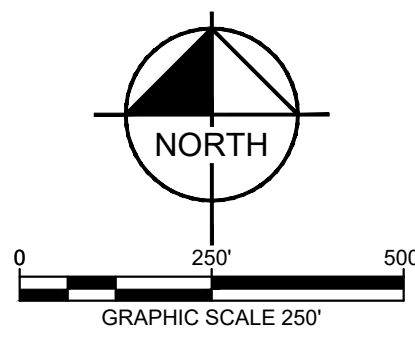
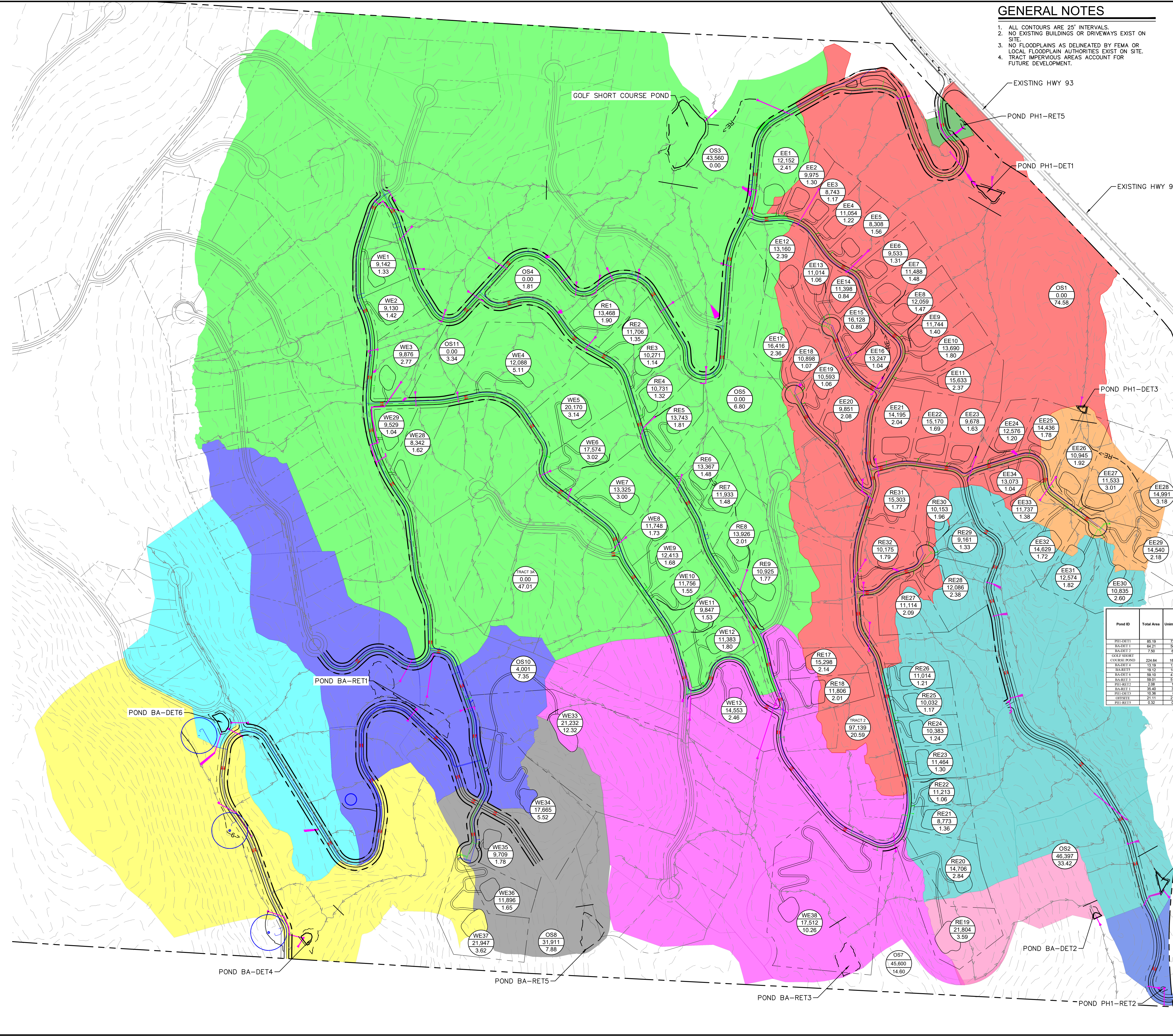
- PROPOSED ROAD CENTER
- PROPOSED EDGE OF PAVEMENT
- PROPOSED RIGHT-OF-WAY
- PROPOSED EASEMENT
- 1- - - - - SWALE TYPE 1 AND FLOW DIRECTION
- 2- - - - - SWALE TYPE 2 AND FLOW DIRECTION
- 3- - - - - SWALE TYPE 3 AND FLOW DIRECTION
- 4- - - - - SWALE TYPE 4 AND FLOW DIRECTION
- 5- - - - - SWALE TYPE 5 AND FLOW DIRECTION
- 6- - - - - SWALE TYPE 6 AND FLOW DIRECTION
- RE- SWALE REDIRECT
- DRAINAGE WAYS
- PROPOSED TOE PROTECTION SWALE
- PROPOSED SANITARY SEWER
- PROPOSED WATER LINE
- ROADWAY DRAINAGE FLOW
- PROPOSED INLET
- PROPOSED HEADWALL
- RIPRAP
- PROPOSED PIPE

NOTE:
 IMPERVIOUS AREA SHOWN ASSUME ALL BUILDING FOOTING IS IMPERVIOUS.

POND DRAINAGE AREAS

- POND-PH1-DET1 DRAINAGE AREA
- POND-BA-DET1 DRAINAGE AREA
- POND-BA-DET2 DRAINAGE AREA
- POND GOLF SHORT COURSE DRAINAGE AREA
- POND-BA-DET4 DRAINAGE AREA
- POND-BA-RET5 DRAINAGE AREA
- POND-BA-DET6 DRAINAGE AREA
- POND-BA-RET3 DRAINAGE AREA
- POND-PH1-RET2 DRAINAGE AREA
- POND-BA-RET1 DRAINAGE AREA
- POND-PH1-DET3 DRAINAGE AREA
- POND-PH1-RET5 DRAINAGE AREA

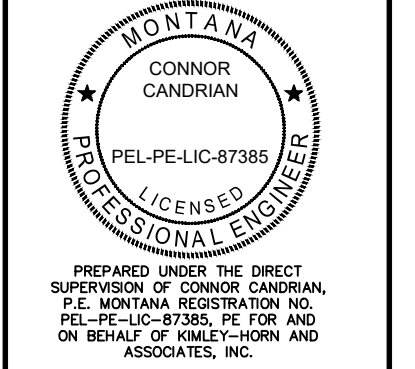
Pond ID	Total Area	Unimproved	Lawn/Landscaping	Residential	Paved	Minimum Required Volume (ac-ft)	Provided Volume (ac-ft)
PH1-RET1	85.19	79.46		7.99	4.75	0.8	0.96
BA-RET1	64.21	56.79		3.31	2.11	0.32	0.32
BA-RET2	7.92	6.62		0.5	0.38	0.07	0.14
GOLF SHORT COURSE POND	224.64	189.19	15.31	6.82	18.7	1.27	4.5
BA-DET1	13.19	12.24		0.5	0.75	0.07	0.43
BA-DET2	19.12	18.37		0.68	0.38	0.04	0.88
BA-DET3	59.10	47.65		1.38	5.10	0.47	0.83
BA-DET4	89.01	51.12		2.93	4.97	0.66	1.27
PH1-RET2	2.08	1.73		0	0.17	0.01	0.02
BA-RET3	35.40	32.2		1.6	1.6	0.27	1.98
PH1-DET1	10.36	6.6		1.32	2.45	0.28	0.13
PH1-DET2	21.11	21.11		0	0	0	0
PH1-RET5	13.32	0.18		0	0.14	0.01	0.06



NAME OF SUBDIVISION:
 FLATHEAD LAKE CLUB

NO.	REVISIONS	DATE	BY

Kimley»Horn
 © 2025 KIMLEY-HORN AND ASSOCIATES, INC.
 601 W 1ST AVE, SUITE 1400, SPOKANE, WA 99201
 PHONE: 509-923-8225
 WWW.KIMLEY-HORN.COM



PREPARED UNDER THE DIRECT SUPERVISION OF CANDRIAN, P.E. MONTANA REGISTRATION NO. PEL-PELIC-87385, AS FOR AND ON BEHALF OF KIMLEY-HORN AND ASSOCIATES, INC.

KHA PROJECT
 193152000
 DATE
 3/27/2026
 SCALE: AS SHOWN
 DESIGNED BY: JMH
 DRAWN BY: TAM
 CHECKED BY: CJC

FLATHEAD LAKE CLUB
 FLATHEAD COUNTY, MONTANA

SHEET NUMBER
SWGL-1